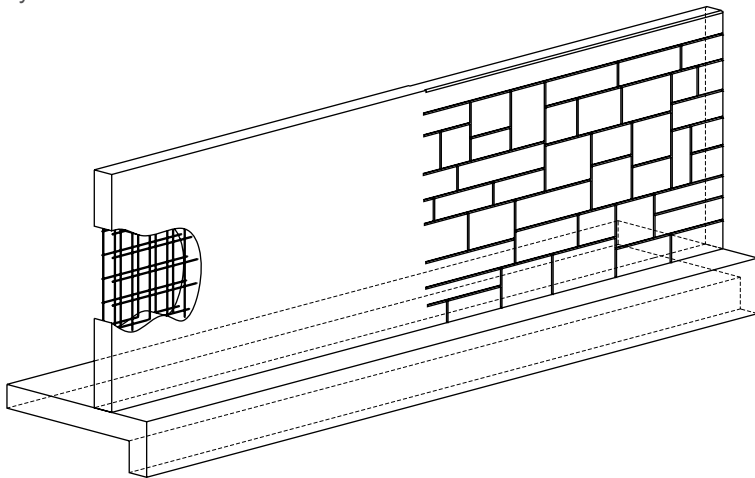


nextWALL™
RETAINING WALL SYSTEM

The *nextWALL™* proprietary system by ECS is a design-build cast-in-place concrete structure that creates usable and valuable space out of sloping terrain. The *nextWALL™* system provides a cost-effective design and a durable structure. In addition, with the ECS cast-in-place system, the timeline from purchase order to project completion is significantly shorter than what you would endure with prefabricated parts. On your next project, delegate the specialized land management structures to ECS and free up the site contractor to focus on what they do best.



THE *nextWALL™* SYSTEM SATISFIES THE FOLLOWING DESIGN AND CONSTRUCTION STANDARDS

- ASTM (American Society of Testing and Materials)
- AASHTO (American Association of State Highway and Transportation Officials)
- ACI (American Concrete Institute)
- CRSI (Concrete Reinforcing Steel Institute)
- DOTs (State Departments of Transportation)

TESTIMONIALS

“Over many years, ECS has value-engineered and installed quite a few cantilever retaining walls with outstanding results. When I need a concrete solution, they are my first call.”

Jim Resar, P.E., P.S., President, J.A.R. Engineering

“My housing development needed a substantial concrete wall to accommodate a culvert crossing. ECS engineered a wall that was cost-effective and professionally installed.”

Jim Kavalec, Principal, Twin Creeks Development Partners

WHEN TO USE *nextWALL™*

Cast-in-place retaining walls where cost-effectiveness and structural integrity are both important.

How can we ensure both? Because we both design *and* build, we know appropriate design parameters for structural integrity and cost-effectiveness. With ECS you get both because we do both.

Special Site Conditions

Site conditions may preclude the use of prefabricated wall components or traditional wall designs. *nextWALL™* adapts geometrically to any site conditions.

Structural integrity can also be beautiful

nextWALL™ blends into any setting through the use of form liners and concrete stain.

Each of these unique *nextWALL™* applications is a cast-in-place concrete structure that offers the most sensible solution to create valuable space from your site's sloping terrain.