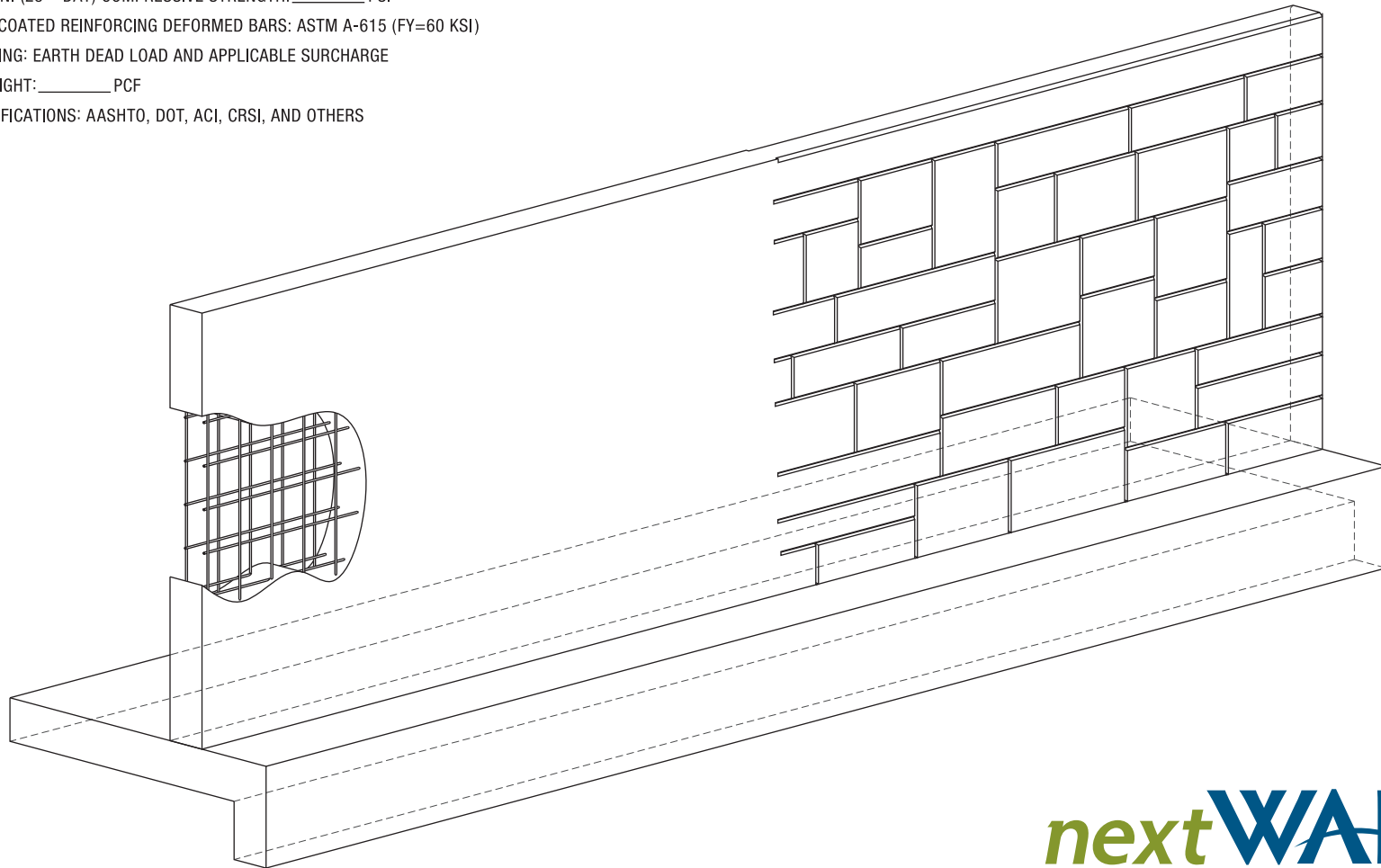


## DESIGN SPECIFICATIONS

- CONCRETE MIN. (28 – DAY) COMPRESSIVE STRENGTH: \_\_\_\_\_ PSI
- EPOXY OR UNCOATED REINFORCING DEFORMED BARS: ASTM A-615 (FY=60 KSI)
- DESIGN LOADING: EARTH DEAD LOAD AND APPLICABLE SURCHARGE
- SOIL UNIT WEIGHT: \_\_\_\_\_ PCF
- DESIGN SPECIFICATIONS: AASHTO, DOT, ACI, CRSI, AND OTHERS



**nextWALL**™  
RETAINING WALL SYSTEM